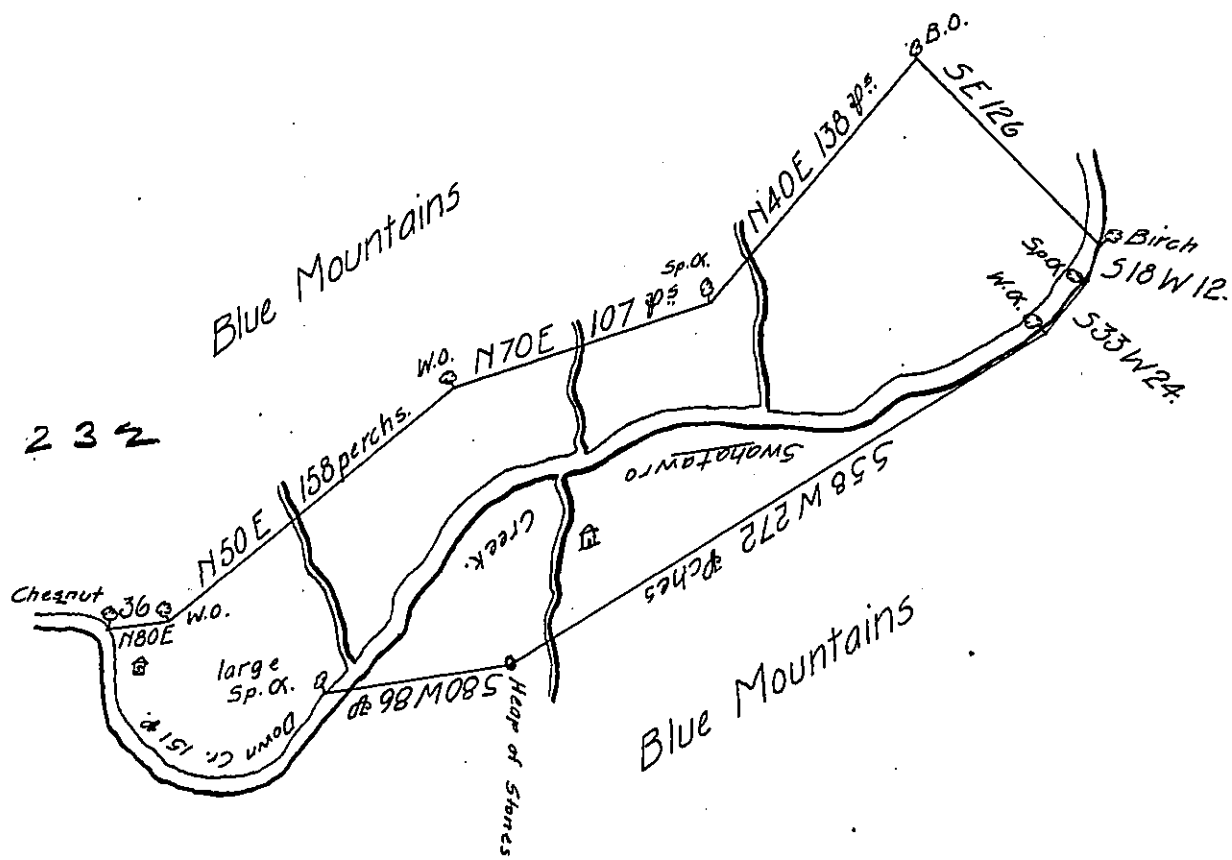


C 219 - 232



A Draught of a Tract of Land situate on Swahatawro Creek
 in the County of Lancaster containing Two hundred & forty five Acres
 and the usual allowance of six acres & Cent Surveyed the 22^d Day
 of November 1751 to Joshua Maddox Esq^r in pursuance of a Warrant
 Dated the 26^(th) Day of September 1751.

Surveyed by

W^m Parsons D.S.

IN TESTIMONY that the above is a copy of the original remaining on file in
 the Department of Internal Affairs of Pennsylvania, made
 conformably to an Act of Assembly approved the 16th day of
 February, 1833, I have hereunto set my Hand and caused
 the Seal of said Department to be affixed at Harrisburg,
 this sixth day of October 1905.

Haac R. Parsons
 Secretary of Internal Affairs.